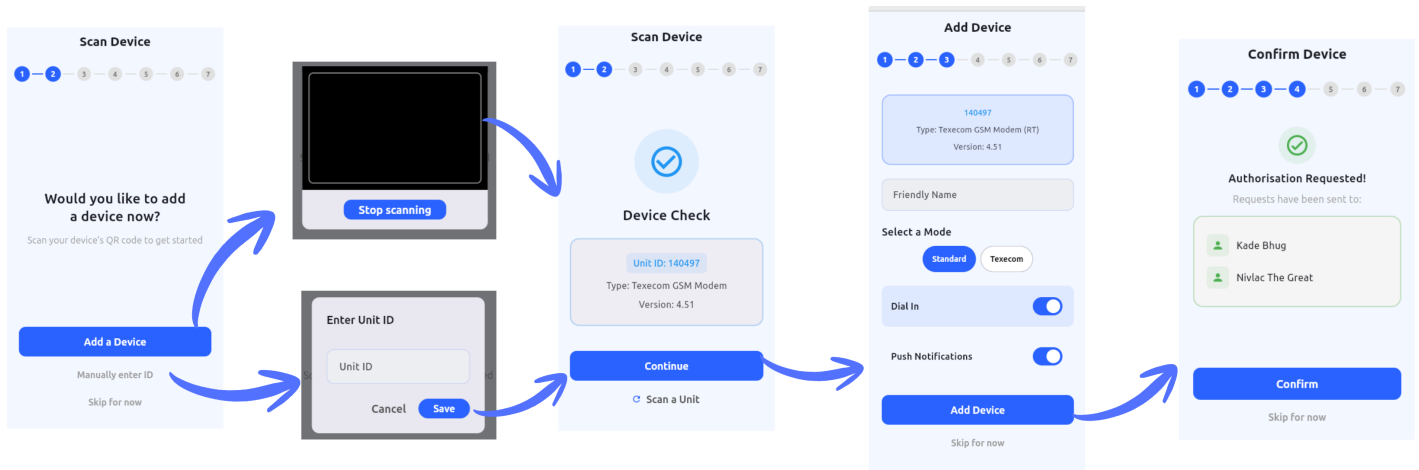
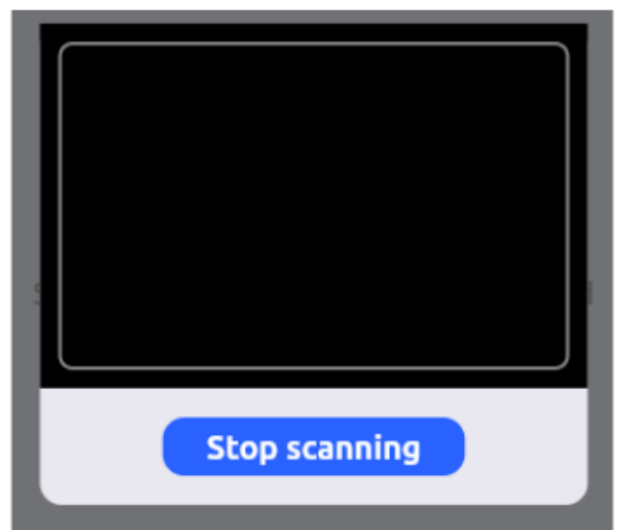
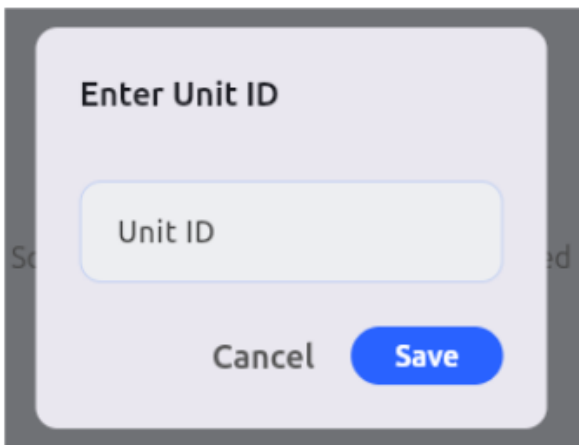
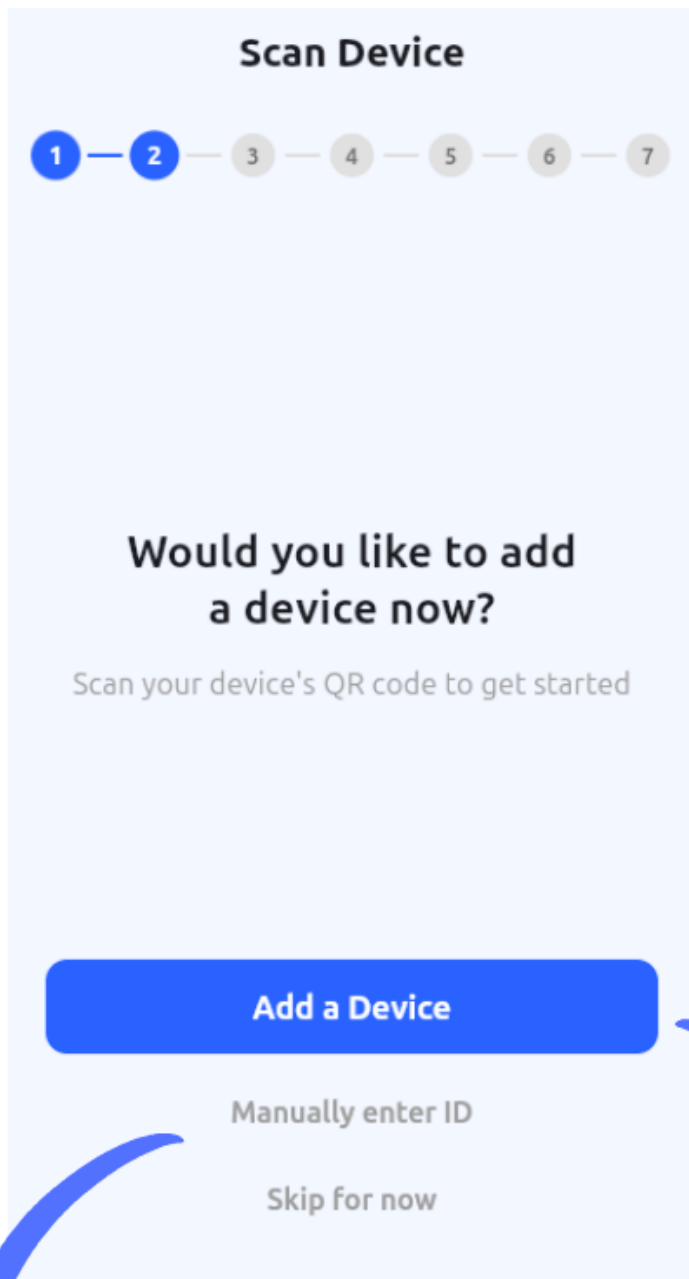


Adding Devices

Adding Your First Device

After successful registration, you'll be automatically logged in and prompted to add your first device.





Option 1: Scan Device Barcode (Recommended)

The fastest way to add your device:

1. Tap "Add a Device"
2. Allow camera access when prompted
3. Scan the QR code or barcode on your Finmon device
4. The system will automatically populate the device details

Option 2: Manual Entry

If scanning isn't possible:

1. Tap "Manually enter ID"
2. Type your Unit ID (found on the serial number label of your Finmon device)
3. Tap "Continue"

Device Configuration

Once your device is identified, configure these settings:

1. **Friendly Name:** Give your device a meaningful name (e.g., "Home Alarm", "Office Security")
 2. **Dial-In Access:** Enable this option to allow remote control of your alarm panel
 3. **User Code:** Enter your 4-digit alarm code (the same one you use on your keypad)
 4. **Push Notifications:** Enable to receive real-time alerts on your phone
 5. Tap "Add Device" to save your configuration
-

Understanding the Authorization Process

After adding a device, you'll encounter one of three authorization statuses:

Authorization Requested

Your request has been sent to the device administrators. This is normal for shared systems where multiple users have access. Wait for an existing administrator to approve your request.

Master Access Granted

You've been approved as a device administrator. The device will now appear on your home screen with full access privileges.

Duplicate Device

The system detected this device is already linked to your account. Simply return to the home screen and look for your device in the list. If you are unable to find your device, select the 3 menu

lines on the top left of the screen, then select System Options and Restart.

Revision #7

Created 16 July 2025 09:38:54 by Jonathan Cox

Updated 5 January 2026 12:39:10 by Kade Bhugwathideen