

First Connection

Connecting to Your Device

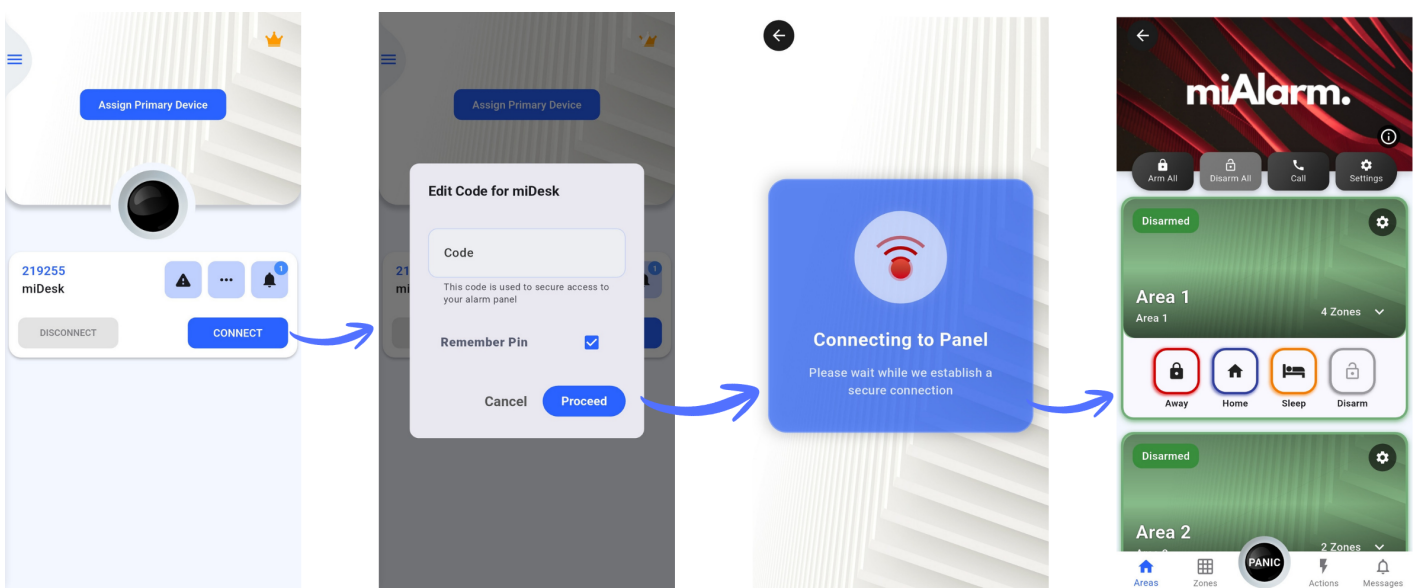
Once authorized, your device appears on the home screen showing:

- Device name
- Unit ID
- Connection status
- "Open" or "Connect" button



Making Your First Connection

1. Tap "Open" on your device tile
2. If prompted, enter your 4-digit user code
3. Wait for the connection to establish (you'll see a loading screen)
4. Once connected, you'll have full access to monitor and control your alarm system



Connection Tips:

- Ensure your alarm unit has power and network connectivity

- The unit should show a green network status light
 - If connection fails, verify your user code is correct
-

Next Steps

Now that you're connected, explore these essential features:

- **Set a Primary Device:** For quick access from the home screen
 - **Configure Notifications:** Customize which alerts you receive
 - **Add Emergency Contacts:** Set up quick access to important numbers
 - **Explore Your Panel:** Familiarize yourself with zones and areas
-

Revision #3

Created 16 July 2025 09:43:04 by Jonathan Cox

Updated 17 July 2025 09:59:21 by Kade Bhugwathideen