

Primary Device Configuration

Primary Device Configuration

Understanding Primary Devices

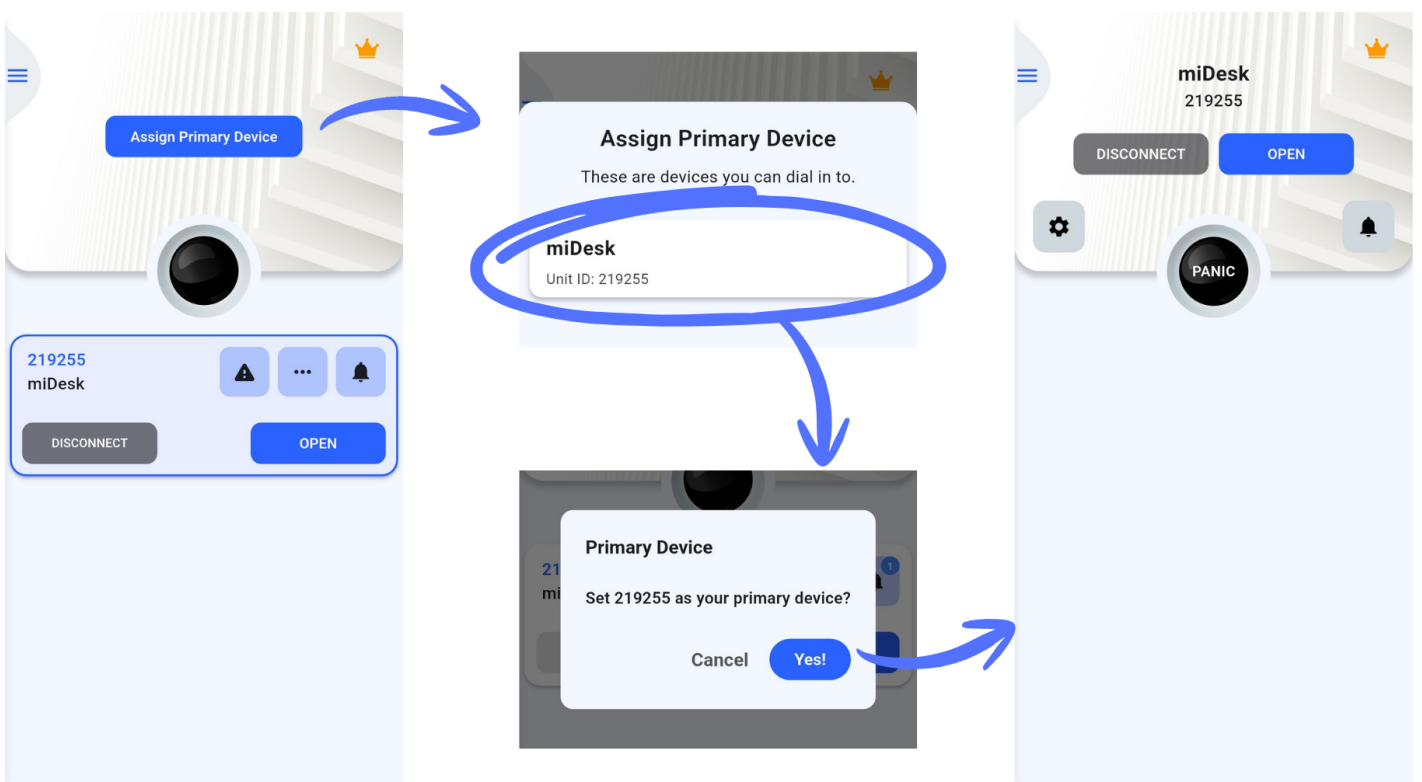
A primary device is your most frequently accessed alarm system, receiving:

- Priority connection allocation
- Prominent home screen placement
- Faster response times

Setting Your Primary Device

Method 1: Home Screen Setup

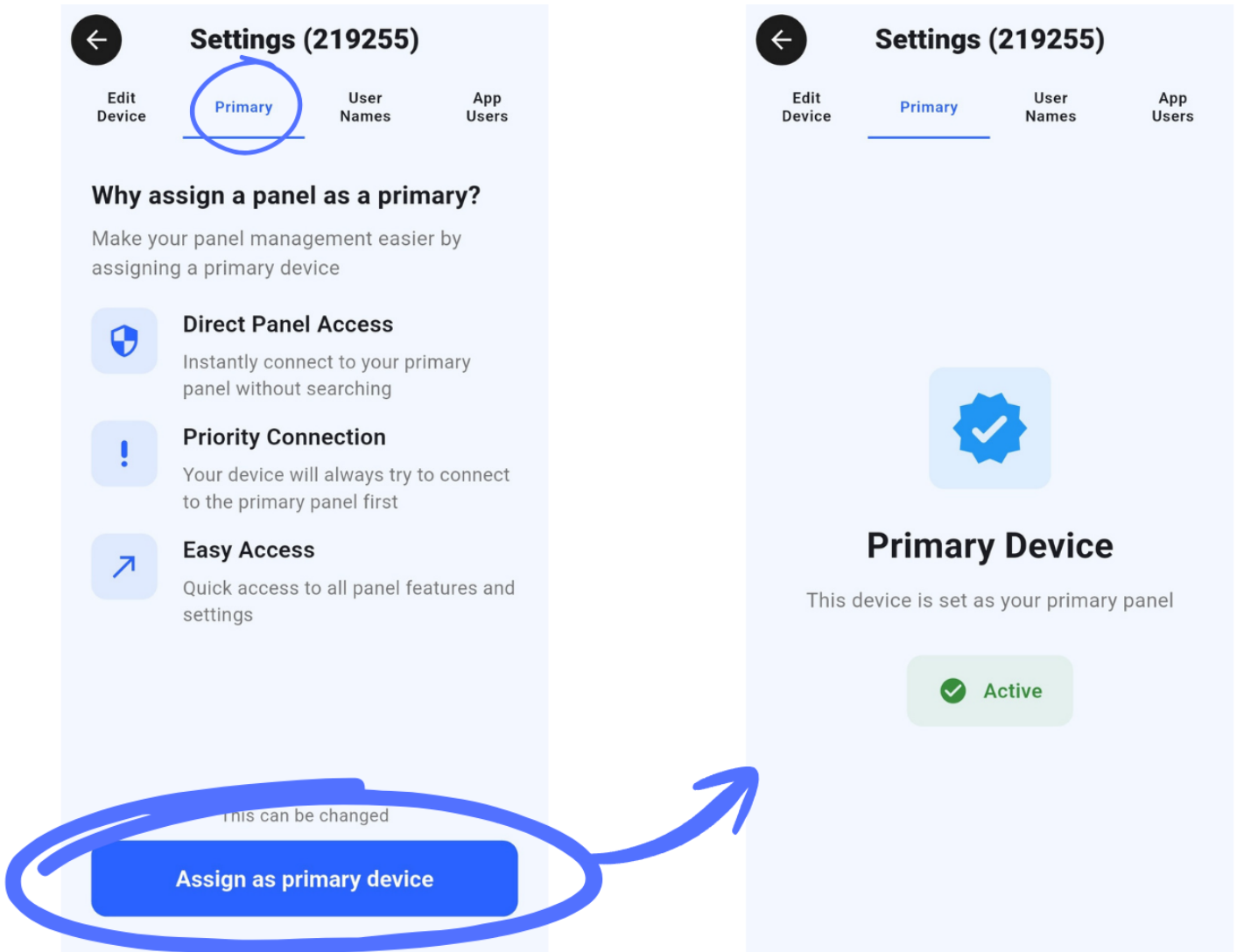
1. Tap "Assign Primary Device" on the main screen
2. Select your preferred device from the available list
3. Confirm your selection



Method 2: Device Settings

1. Open device settings
2. Navigate to the "Primary" tab

3. Enable "Set as primary device"
4. Confirm the change



Managing Primary Status

- Only one device can be designated as primary
- Change primary designation at any time
- Remove primary status through device settings
- Visual indicators show current primary device

Revision #4

Created 16 July 2025 11:46:13 by Jonathan Cox

Updated 22 July 2025 06:50:59 by Jonathan Cox